

CERTIFICATE OF LOCATION OF GOVERNMENT CORNER

NORTHEAST Corner of Section 22, Township 106, Range 39, 5TH P.M.

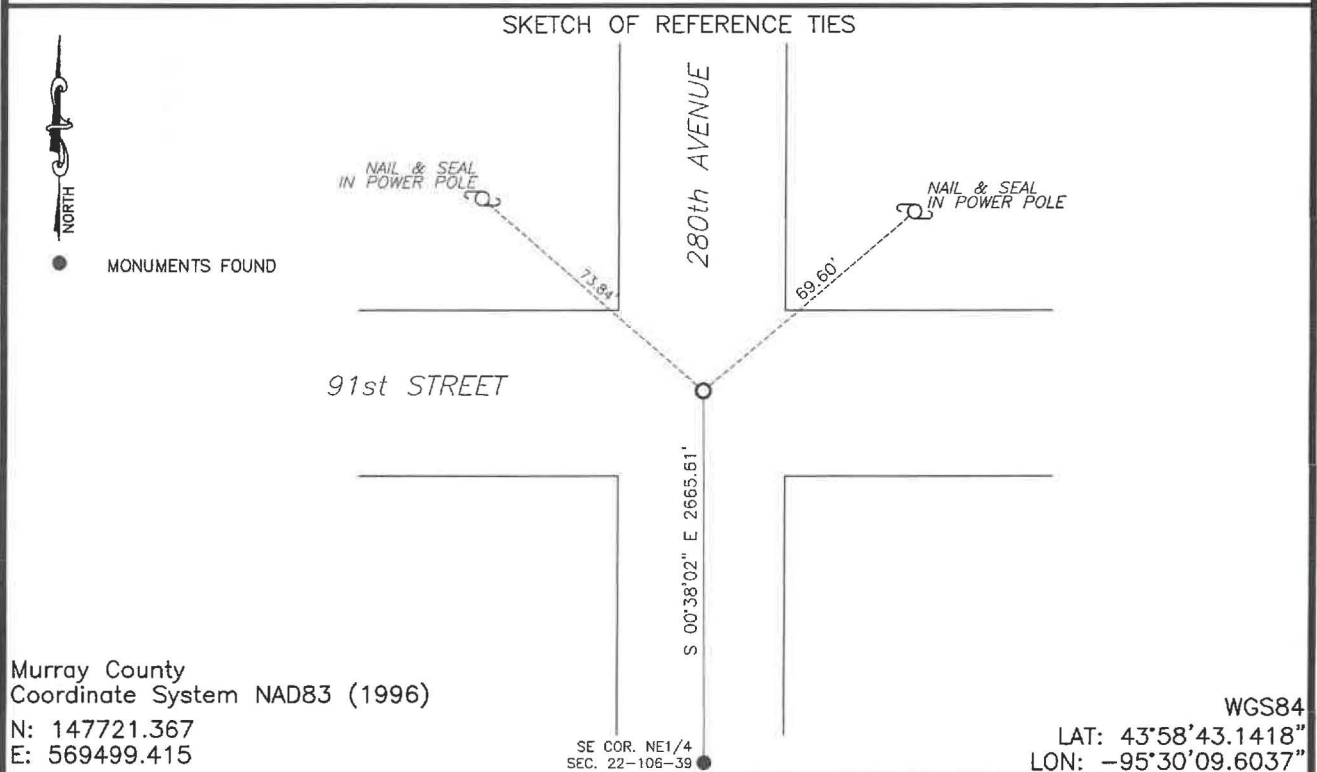
STATE OF MINNESOTA, County of MURRAY

At the corner location shown on the sketch:

☒ On 8/12/2024 found a concrete monument
DATE

☐ left monument as found, ☒ lowered monument, ☐ removed monument (explain)

☒ On 1/29/2025 placed a 5/8" iron with seal #43844 over top of the concrete
DATE monument.



Statement of evidence relative to this corner location is on back of page.

I hereby certify that this document and the data contained herein was prepared by me or under my direct supervision.

Daniel L. Buettel

Daniel L. Buettel
License No. 43844

3/13/2025
DATE

MAR 13 2025

Karen Brown

MURRAY COUNTY RECORDER

Statement of Evidence

NORTHEAST CORNER OF SECTION 22, T106N, R39W OF THE 5th P.M.

In September 1858 W.J. Neely surveyed the east township line.

In July of 1861 J.W. Myers surveyed the north, south, and west township lines.

In August of 1861 Wellman & Smoot subdivided the township.

A survey by J.W. Woolstencroft dated November 2, 1912 notes an iron stake in the center of the road.

Survey records dated February 5, 1934 note a concrete monument with a chiseled "x" placed at the corner.

County records dated May 16, 2012 show a $\frac{3}{4}$ " steel pin placed at the corner.

On August 12, 2024 Bueltel-Moseng Land Surveying found a $\frac{3}{4}$ " rebar, removed and dug with a backhoe. Found a concrete monument 3.5' down and on its side. We restored the monument and placed an iron on the north side of the monument.